

Tank, Silo and Hopper Weighing

Weighing Modules consist of load cell & mounting hardware that converts the Tank to a Scale.

The MTW-05 is designed to provide a low-profile solution for high capacity tank and vessel weighing applications. This assembly combines the compression transducer, mounting Hardware and with a suspension to support the weigh vessel & control the Load application. All assembly is corrosive resistant painted steel mount to provide an effective solution for most indoor/outdoor weighing needs. The design is also more compact and easier to install than most double-ended beam designs on the market.

Standard uplift protection also eliminates the need for stay rods or additional hardware for outdoor applications. Each MTW-05 assembly contains one load cell with 15 mtr. of cable, one mount and all the necessary hardware to install highly-effective weigh point.

There are Two Types of weighing Modules available:

- A) Compression
- B) Suspension



Tank, Silo and Hopper Weighing

We offer a complete solution for all your process weighing application requirements:

- Consultation from the beginning
- Outstanding load cells and mounting kits suitable for use in virtually all industrial applications and accuracy requirements
- Ultra- modern transmitters and indicators for signaling, indication and control
- Commissioning and training
- Service during the life-time of the device



Tank, Silo and Hopper Weighing

- Ideally suited for liquids, solids weighing & accurate batch preparation for any batch process weighing applications.
- Simple in design, system consisting of Quality shear beam/compression load cells meeting IP-67 / 68 Standards
- Junction Box meeting IP-65 / 55 Standards
- Weight Indicator / Controller with RS-232, RS-485, 4-20 mA & other optional features
- Enclosure available for weight indicator, both weather proof & flame proof
- Special screened / FRLS cable used between junction box & Weight indicator
- User friendly batching features that can take up to 12/16 digital I / O's, 99 batch formulations with a batching accuracy of +/- 0.05 % (optional)
- Easy to install , integral jacking bolts , simple electrical connections, digital calibration, batch reports and a host of welcome features are available.
- Finds applications for weighing solids, powders, liquids and other raw materials like coal, cement, chemicals, molten steel etc.
- Can be used in rubber, oil, chemical , pharma, soap, paint, and food processing industries.



Tank, Silo and Hopper Weighing

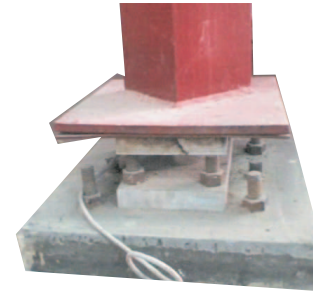
Applications:-

- Big storage Silos and Tanks
- Mixers, Stirrers and Kneaders
- Dissolvers
- Reactors and Heating tanks

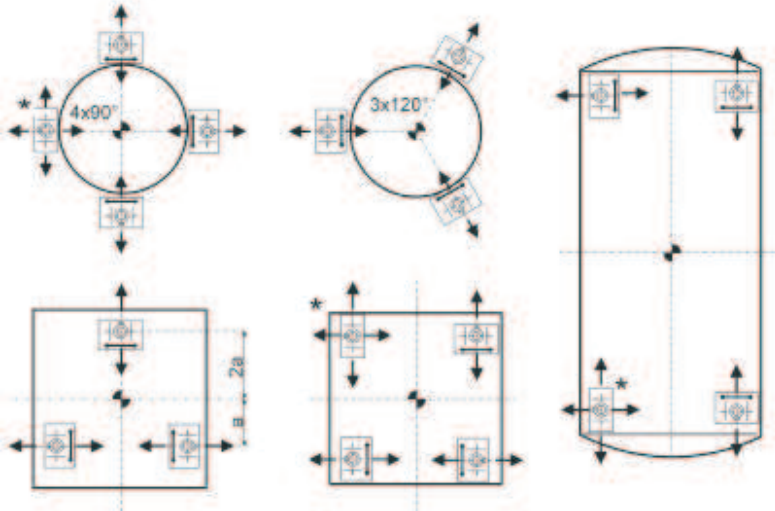


Salient Features:-

- # Easy to install in limited space
- # Modular design for easy maintenance.
- # Lift-off Protection.
- # Permanent Protection against Load Cell Damage
- # Wide temperature range
- # Resistant against vibration
- # Simplifies Load Cell installation.
- # Space grade Stain less Steel Load Cell.



Tank, Silo and Hopper Weighing



Technical Specifications:-

Rated Capacities	: 1K, 1.5K, 2.5K, 5K, 10K, 15K, 25K, 35K, 50K, 75K, 100K, Kg
Full Scale Output (FSO)	: 2mV/V or 3.0 mV/V \pm 0.25%
Accuracy Class	: Standard
Combined Error % FSO	: < .03
Non-Linearity % FSO	: < .01
Hysteresis % FSO	: < .02
Creep Error % FSO	: < 0.01 in 20 minutes
Non-Repeatability % FSO	: < .01
Zero Balance % FSO	: < 1.0
Insulation Resistance	: > 1000 Mohms at 50VDC
Temperature Effect on Zero :% FSO/oC	: < 0.01
Temperature Effect on Output % of Load /oC	: < 0.001
Compensated Temperature Range	: 25o to 40oC
Operating Temperature Range	: 25o to 50oC
Storage Temperature Range	: 0o to 85oC
Input Resistance	: 700-745 Ohms
Output Resistance	: 699-707 Ohms
Recommended Excitation Voltage	: 10 Volts DC
Maximum Excitation Voltage	: 15 Volts DC
Safe Side load	: 100% of Rated Capacity
Safe Overload	: 150% of Rated Capacity
Ultimate Overload	: 300% of Rated Capacity
Sealing Meets	: Ip66/ IP67 Standards

